



The Republic of Komi



Corporation of
Development
the Republic of Komi



Investment Portal
The Republic of Komi

Table of Contents

- 1. The Republic of Komi: General Information**
- 2. Forest Resources of the Republic of Komi**
- 3. The Republic of Komi Natural Resources**
- 4. Power System of the Republic of Komi**
- 5. Transport Infrastructure of the Republic of Komi**
- 6. Industrial Potential of the Republic of Komi**
- 7. Investment Proposals**

The Republic of Komi: General Information

The **Komi Republic** is a beautiful northern region, with rich mineral resources, untouched nature, charming towns and villages, talented people, and unique culture.



AREA

417 ths km²



POPULATION

841 ths



CAPITAL

SYKTYVKAR



EXTENSION

1275 km. 785 km. 695 km.
sw/ne s/n w/e



The Republic of Komi: General Information

70 000
LAKES



8 100
ANIMAL SPECIES



2 500
PLANT SPECIES



50
FISH SPECIES



Temperate continental climate

+13 °C average temperature in July (the warmest month)

-18 °C average temperature in January (coldest month)





Forest Resources of the Republic of Komi

73%

OF TERRITORY IS
COVERED BY
FORESTS

3.0 bln.m³

WOOD STOCK

33.8 mln.m³

ESTIMATED ANNUAL
CUT



The Republic of Komi Natural Resources

- Gas – 27.2 bln.m³
- Coal – 88 656.54 mln.tons
- Rock Salt – 2 750 mln.tons
- Oil Shales – 1 084 mln.tons
- Oil – 44.3 mln.tons
- Peat – 889.0 mln.tons
- Bauxites – 416.4 mln.tons
- Titanium Ores – 370 mln.tons
- Glass Sand – 10 mln.tons
- Barites – 1.79 mln.tons
- Veined Quartz – 458 ths.tons
- Phosphorites – 178 ths.tons

Power System of the Republic of Komi

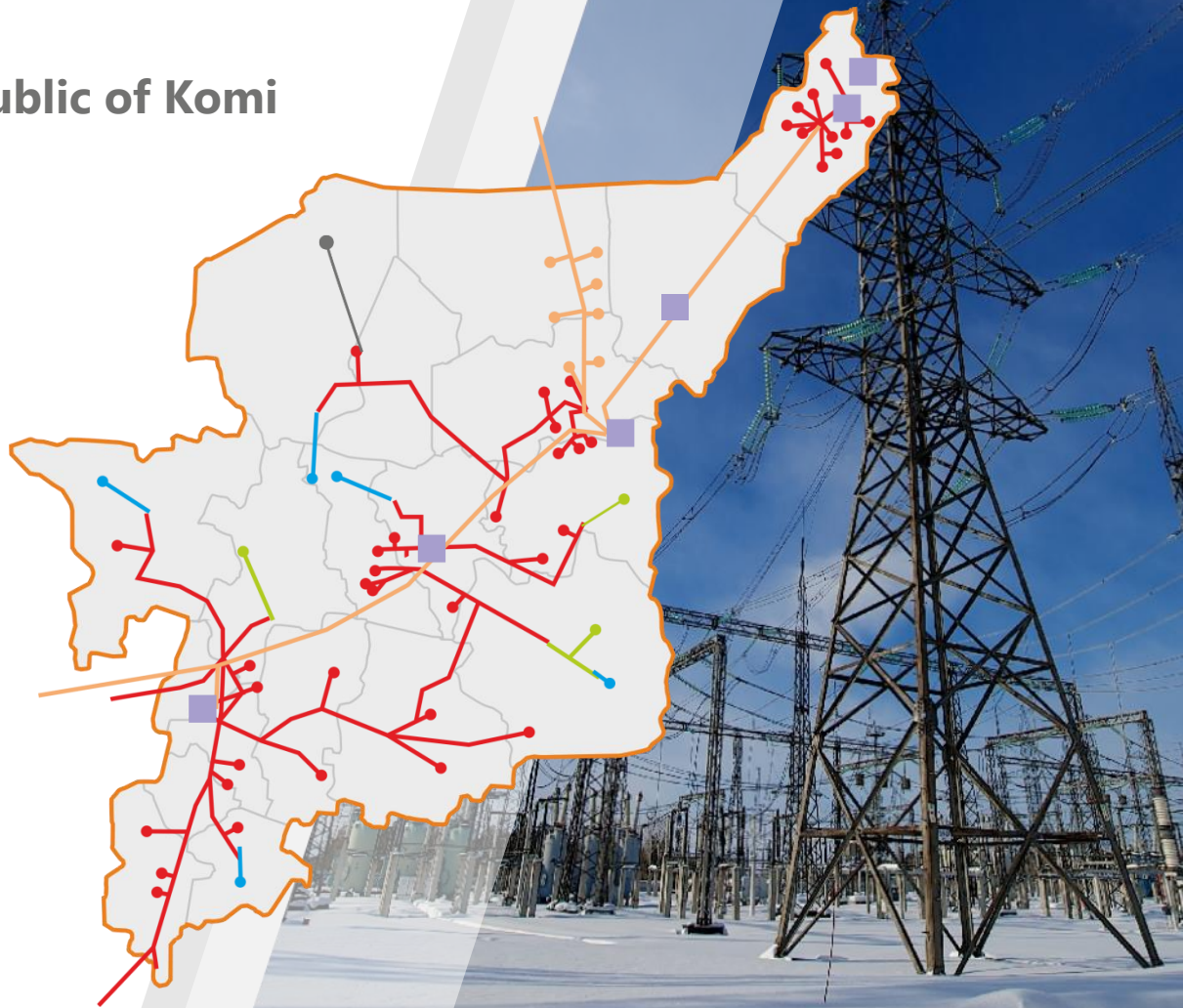
- POWER GENERATION STATIONS
- GRID AND 220 kV SUBSTATIONS
- GRID AND 110 kV SUBSTATIONS
- GRID AND 35 kV SUBSTATIONS
- GRID AND 20 kV SUBSTATIONS
- GRID AND 10 kV SUBSTATIONS

2.6 gw

TOTAL REGIONAL POWER
GENERATION CAPACITY

25 880 km.

TOTAL POWER TRANSMISSION
LINES LENGTH



Transport Infrastructure of the Republic of Komi

2.2

ths.km

RAILWAY SYSTEM

7

AIRPORTS

AIR SERVICE

4.1

ths.km

WATERWAYS

11.9

ths.km

MOTORWAYS



Industrial Potential of the Republic of Komi

524.6
bln.rub.

GROSS REGIONAL PRODUCT



**OIL PRODUCTION
AND PROCESSING**



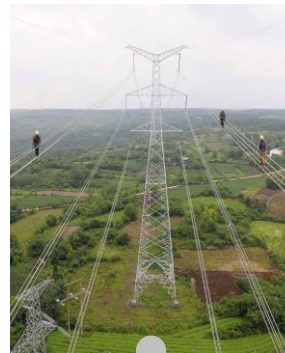
**NATURAL GAS
INDUSTRY**



**COAL INDUSTRY
AND MINING COMPLEX**



**TIMBER PROCESSING
COMPLEX**



ENERGY

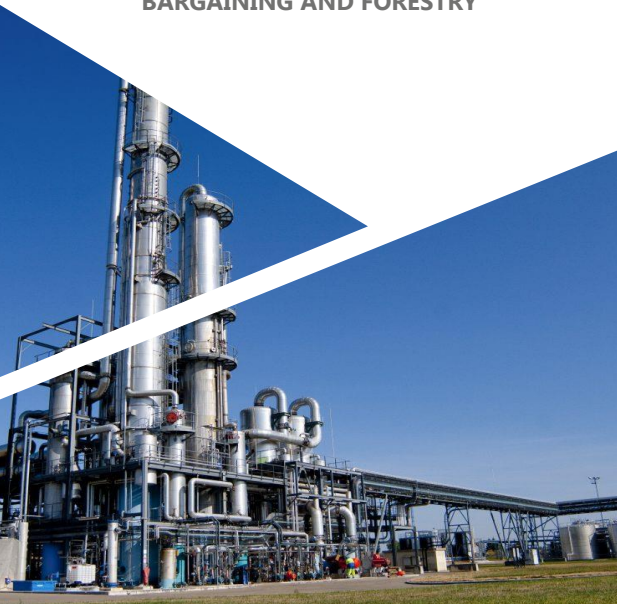


**AGRICULTURAL
COMPLEX**

Investment Proposals

Construction of a plant for the production of bioethanol

PROCESSING OF BALANCE WOOD,
WOOD WASTE FROM FOREST
BARGAINING AND FORESTRY



Construction of the international airport «Sokolovka»

FORMATION OF A NODE OF
INTERNATIONAL LOGISTICS CENTER



Construction of the «Sosnogorsk-Indiga» railway

ENSURING TRANSPORT
OF NATURAL RESOURCES



Investment Proposals

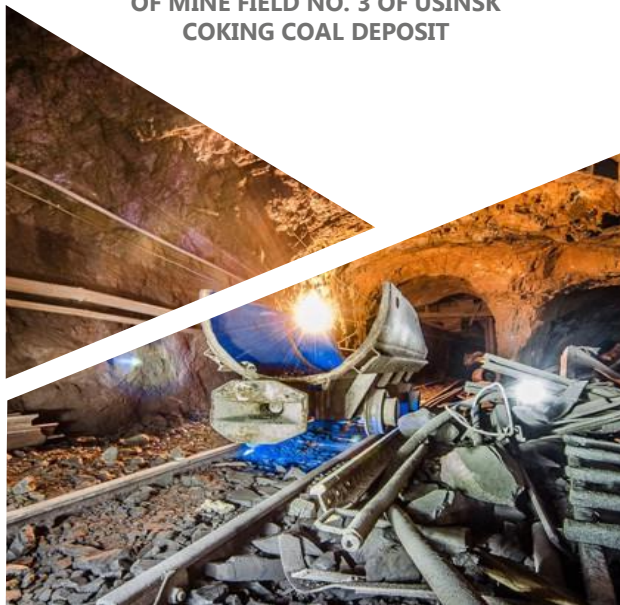
Extraction of coal of open methods in Vorkuta

DEVELOPMENT OF UPPER
SYRYAGINSKY COAL DEPOSIT



Mastering the minefield №3 of the Usinsk coal basin

CONSTRUCTION OF USINSKY 3 ORE-
DRESSING MILL WITHIN THE LIMITS
OF MINE FIELD NO. 3 OF USINSK
COKING COAL DEPOSIT



Construction of the mining and metallurgical complex

PROCESSING OF TITANIUM ORES
AND QUARTZ (STEEL) SANDS OF THE
PIZHEMIAN DEPOSIT



Investment Proposals

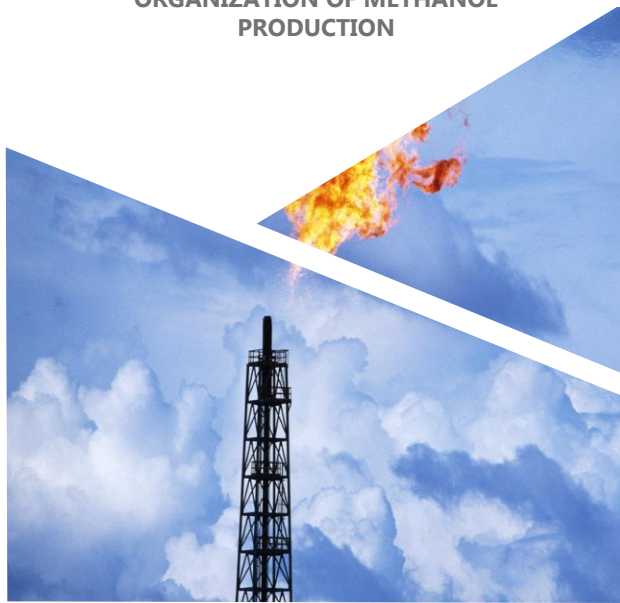
Yaregsky mining chemical complex

PIGMENT TITANIUM DIOXIDE,
TITANIUM NANO DIOXIDE, AEROSIL.



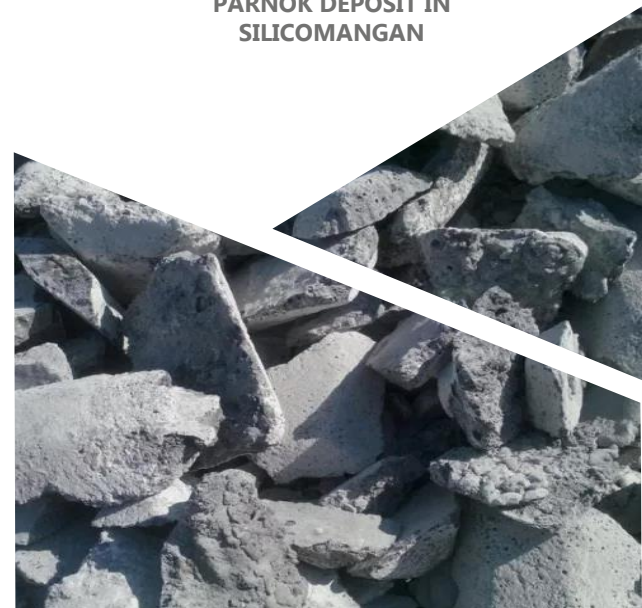
Searches, intelligence and development of deposits

EXTRACTION OF NATURAL GAS
AND GAS CONDENSATE,
ORGANIZATION OF METHANOL
PRODUCTION



Ferroalloy plant

PROCESSING
IRON-MANGANESE ORES OF
PARNOK DEPOSIT IN
SILICOMANGAN



Investment Proposals

Construction of a waste processing MSW

CREATION AND DESIGN OF THE
FACTORY TO 30 THOUSAND. TONS IN
A YEAR (3 MODULE)



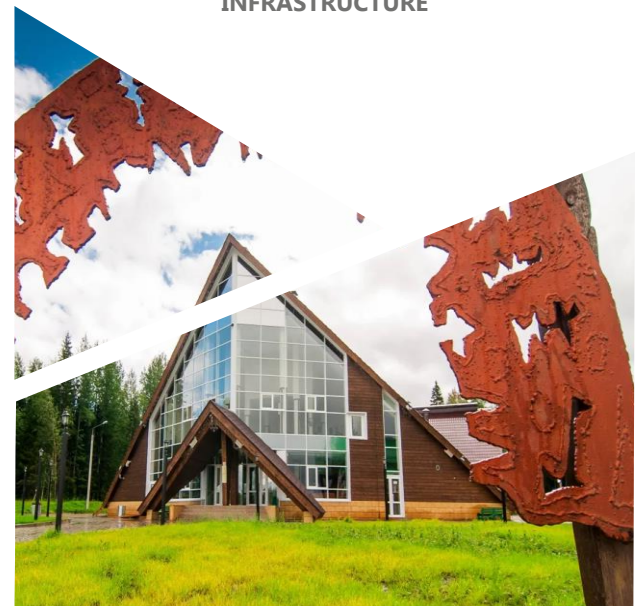
The creation of an IT infrastructure for the Northern Sea Route

NETWORK COMMUNICATION AT THE
BASIS OF QUADROCOPTERS FOR THE
MOST CRITICAL SITES OF THE NORTH
SEA ROAD



Development of a tourist and recreational cluster

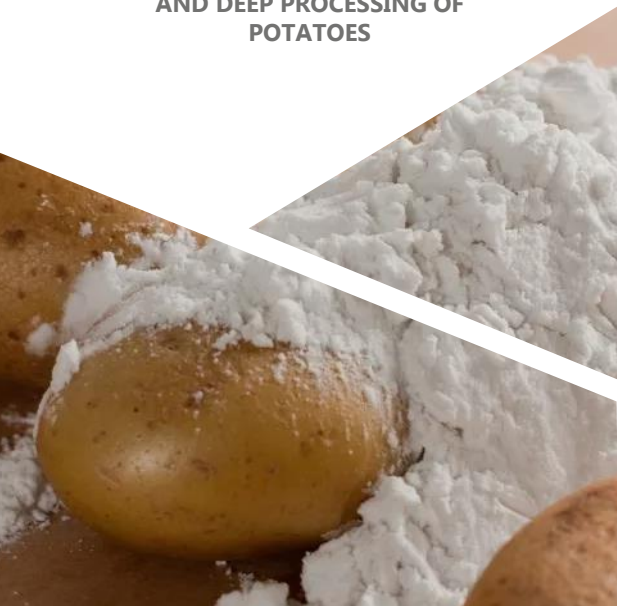
BUILDING AND OPERATION OF
SEPARATE OBJECTS OF TOURIST
INFRASTRUCTURE



Investment Proposals

Manufacture of starch and starch products

CREATION OF PRODUCTION FOR
PRIMARY PROCESSING, STORAGE
AND DEEP PROCESSING OF
POTATOES



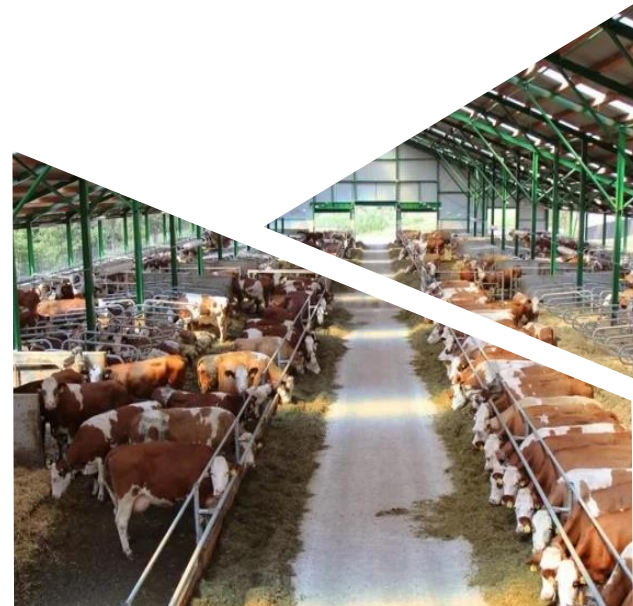
Construction of a greenhouse complex «Knyazhpogostsky»

ORGANIZATION OF GROWING
VEGETABLES OF PROTECTED
GROUND



Construction of a dairy farm for 780 cows

IMPROVEMENT OF PRODUCTION OF
MILK AND MEAT





**WELCOME
TO THE REPUBLIC OF KOMI**



Ministry of Investments, Industry and Transport of the Republic of Komi

Russia, The Republic of Komi, Syktyvkar,
Internationalnaya str., 157, 167982
Phone: (8212) 24-03-48
Fax: (8212) 21-62-14
E-Mail: obotdel@minprom.rkomi.ru
www.minprom.rkomi.ru



Corporation of Development of the Republic of Komi

Russia, The Republic of Komi, Syktyvkar,
Internationalnaya str., 108a, 167000
Phone: (8212) 40-04-54
Fax: (8212) 40-04-54
E-Mail: info@kr11.ru
www.kr11.ru

www.invest.rkomi.ru